



## DEAL OR NEW DEAL?

There is a sketch featuring the comedian Rowan Atkinson in which one character asks the other, "What is the secret of good comedy?" The answer – "timing" – is delivered, before the question itself has finished, with perfect comic *mis*-timing. Readers of *Magdalene Matters* might be forgiven for thinking that those responsible for the *Magdalene* and *800th* campaigns have long apprenticed themselves to this particular strain of comic genius: the conjunction of meltdown in global financial markets and the pursuit of a major fundraising effort being more reminiscent of the world of Tommy Cooper than of Warren Buffett. For a College which launched a long pre-planned Telethon on the evening of September 11 2001, little comes as a complete surprise.



As I write, the sharpest city minds are trying to make sense of an economic mess that minds (perhaps just a tad less sharp) got us into in the first place. At the same time, it is clear that minds still sharper (and perhaps better attuned to reality) will be needed if we are to steer a course which takes us toward more certain economic waters. There is, currently, much talk of a "new deal" or at least the need for one; for a comprehensive package of measures much like those introduced by Franklin Roosevelt in the 1930s which will redefine our economic goals (as well as our fiscal rules) and reorient the world's social compass. It is to be hoped that, in contemplating such a deal, its authors will remain mindful of the scope of what Roosevelt sought to achieve, including his signal recognition that, "The school is the last expenditure upon which America should be willing to economize". This is, in short, no time to be disinvesting in education; a point which the governments and private enterprises of India and China, for example, are unlikely to fail to grasp.

Support for education – for the enlightenment and cultivation of young minds which will address the problems of the future – will matter as never before. But will it be forthcoming as the urgencies of the moment occlude the longer-term needs of tomorrow? In making the general case, there is inevitably a danger that all of this will sound like special pleading or, worse, smack of rearranging the deckchairs on the Titanic after even the band has stopped playing. More politely: that it advances an "academic" argument at a

time when more practical interventions are required. Not so! Rather, it is an assertion that, as Roosevelt also said, "We cannot always build the future for our youth, but we can build our youth for the future".

Magdalene has been in the business of "building our youth for the future" for an awfully long time and though the task may be never ending, it remains the *raison d'être* of our existence. Everything else is, broadly, a means to this end. But as Roosevelt also warned a beleaguered nation: "It isn't sufficient just to want - you've got to ask yourself what you are going to do to get the things you want," and here we find more solid – or, at least, more self-determined – ground.

Magdalene, along with the rest of collegiate Cambridge wants – and believes it deserves – greater independence, more resources and better facilities. But it also knows both *why* it wants these things and *what it must do* to bring them about. It must earn and retain the respect, the confidence and the trust of those to whom it looks for support; it must prove its continuing relevance to the search for solutions to the world's most pressing problems and it must be courageous in addressing - and encouraging

others to address – the great issues of our times, be they economic, environmental, social or moral. Like the "new deal" itself, this is a challenge from top to bottom and one which is about more than mere survival or the restitution of the *status quo ante*. It is about building better and more inclusive universities and colleges, fully-attuned to their times and leading, not chasing, the great debates.

**"The school is the last expenditure upon which America should be willing to economize"**

**Franklin Delano Roosevelt**

It is widely held that out of every crisis comes opportunity, not least the opportunity to re-evaluate and to re-assess the importance of those individuals and institutions whose potential contribution to the greater good may have been significantly undervalued in more obviously prosperous times.

Education - so often Cinderella at the charitable ball - may yet come to be recognised as the most likely engine of our future recovery and, without question the most likely source of our intellectual renewal. It is time to be bold: for as Roosevelt also said: "The only limit to our realization of tomorrow will be our doubts of today".

MARK BILLINGE



# DEVELOPMENT

## building on a success

AS IT CURRENTLY STANDS, THE FIRST PHASE OF THE CHESTERTON ROAD PROJECT (CRIPPS COURT) has been a notable success. Quite apart from its continuing contribution to the educational and social development of the College, it is also a major source of conference revenue enabling us to make better and more profitable use of the College as a whole, particularly during vacations. Increasing the diversity of the College's income streams has always been an important strand of the *Magdalene Campaign* and one which was very much in the Governing Body's mind when it embarked upon the Chesterton Road Project. Phase I (Cripps Court) was an important first step. As we anticipate the start of Phase II (construction will commence in early 2009) the Governing Body remains determined to complete the Chesterton Road "revolution" and to cement the progress we have already made.

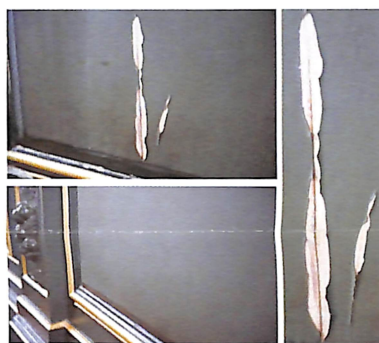
Whilst we recognise that the current economic climate is not a wholly propitious one in which to raise the £1.25 million still required, we have also factored in to our thinking the general reduction in building activity in the East of England and believe that this presents us with a window of opportunity (unlikely to last much beyond the serious construction phase of the 2012 London Olympics) in which the cost of building Phase II may be reduced. Once completed, Phase II will also enable us to house all of our junior members for the whole of their time here. Not since the 1960s has the College looked to members to help it complete a building project and not since then have there been significant opportunities for those who would like to do so, to name College buildings or public rooms. These opportunities are now available to those able and willing to make significant donations towards the project's completion. A brochure outlining both the scheme as a whole and the opportunities available to donors can be obtained from the Alumni & Development Office. Anyone wishing to find out more is asked to contact Mark Billinge: +44 (0)1223 332160; or at [director.development@magd.cam.ac.uk](mailto:director.development@magd.cam.ac.uk)



## THE ANNUAL FUND 2008-9

The main objective of this year's **ANNUAL FUND** is to complete the restoration of Hall. Last year, the Annual Fund was used to undertake work to bring key areas of First Court into conformity with DDA requirements and to restore the splendid Armorial in Hall. The latter, though a notable success, has also served to highlight the rather poor state of the Hall's panelling (last subject to major refurbishment nearly 30 years ago). Candlelight is far kinder to Hall than the harsher light of day: a fact which makes Hall a far less attractive daytime venue than it might otherwise be.

Completion of vital restoration will return the College to a state of which we can all be proud: a notable cause in itself, but also a



HALL PANELLING - AS IT IS (top and right) and AS WE HOPE IT WILL BE (bottom left)

timely contribution to collegiate-Cambridge's 800th anniversary celebrations. Anyone wishing to contribute is warmly invited to contact the Fellow for Development.

## swings and roundabouts:

**THOUGH IT IS A WELL REHEARSED DICTUM IN THE MEDIA** that journalists should report, but never themselves become, the story, it would be a mistake not to record the various comings and goings which have affected the Alumni and Development Office over the summer.

Dr Rachele Stretch resigned her post as Deputy Development Director in July. It is hard to do proper justice to the contribution which Rachele has made to the *Magdalene Campaign* since, in a real sense, she, the Campaign and the Office to which she has lent such special distinction have grown up together. Hers has been a defining contribution and we wish her well in her similar responsibilities at Trinity Hall.

Rachele is succeeded by Guann-Yeu Chin who arrived in September 2007 (as Alumni & Development Officer). His unfailingly cheerful countenance, unrivalled knowledge of the most unexpected subjects and engaging

willingness to give (almost) anything "a go" will be enormous assets to the *Campaign*. Guann-Yeu will travel to North America in November to attend the various events which he is currently helping to mastermind.

The arrival of Kate Siddiqui as Alumni & Development Officer is also a tremendous fillip. Kate, who read History at Robinson and has a keen interest in the History of Art, will bring fresh ideas and, we feel sure, renewed enthusiasm to the tasks in hand.

Kate is currently busy helping to prepare for next April's "Telethon". She also looks forward to meeting with members at the many events she is currently helping to plan.



KATE SIDDIQUI

## MATCHED FUNDING

Details of the Government's Matched Funding Scheme designed to encourage philanthropic donations to English Universities have now been agreed.

Under this scheme, which will operate for three years from 1 August 2008 until 31 July 2011, collegiate Cambridge will receive £1 for every £3 raised in "eligible" donations subject to a cap of £3 million (i.e. £1 million will be available from the government if £3 million is raised). To qualify, gifts must be from "new donors" be they individuals, companies, foundations or trusts in the UK or overseas. "New donors" are defined as donors who have not made a gift to a specific college or to the University in the three years prior to 1 August 2008, though a previous donor to the University can be counted a "new donor" to a College (and *vice versa*).

In Cambridge, the matched funding received will be distributed to the participating colleges and the University in proportion to the contribution each makes to the total raised and will be ring-fenced for student support. It is hoped that the scheme will encourage those thinking of making a donation for the first time to do so.

## CAMPAIGN NEWS

**£11,563,719**

was given or pledged to the Magdalene Campaign by 30 September 2008

Contributions totalling £6,593,675 have been received from 2,087 members of the College, i.e. 29.5% of the membership

**CAMPAIGN TARGET**

**£20,000,000**

# MEMBERS' NEWS

## MUSIC MAESTRO PLEASE



Readers of *Magdalene Matters* and viewers of ITV will be familiar with KATIE DERHAM (1988) who has been a newscaster with ITN since she joined the company in 1998 following four years with the BBC. Members still more loyal to "steam radio" and the printed media than their ipods and inboxes will also know Katie as a regular broadcaster on *Classic FM* and a regular contributor to *Classic FM Magazine*.

Every Saturday, Katie indulges her passion for classical music, sharing her knowledge and enthusiasm (favourite composer Mozart; favourite composition *Rhapsody in Blue*) with millions of listeners nationwide. Were her friends and admirers surprised to find her catapulted into the summer's biggest and most unexpected television "hit" - the BBC's *Maestro*? Perhaps not, for Katie confesses to a sneaking ambition "to take control of", rather than just listen to, the world's great orchestras.

However enjoyable, *Maestro* was, she admits, more of an ordeal than she had imagined. Pitted against seven other high profile celebrity contenders, Katie had just a few weeks to learn to conduct the BBC Concert Orchestra. She was eliminated from the competition - controversially - at the midway stage: "a relief no doubt to Sir Simon Rattle who was obviously quaking in his shoes at the thought of me taking over in Berlin".

Key advice on the programme from mentor Matthew Rowe? "It's all in the upbeat!" - appropriate but, we feel, unnecessary advice for Katie who is pretty upbeat about more or less everything: no doubt a necessary personality trait in one whose "day job" is to deliver a daily digest of the world's news to the rest of us.



Katie also presents "Traveller's Tree" every Monday on Radio 4 at 4.30pm

## ged martin and the cambridge union

**GED MARTIN** (1963) took first class honours in History at Magdalene and was President of the Cambridge Union Society. Both were to prove seminal. A period as a Research Fellow of Magdalene was followed by five years as a Research Fellow in History at the Australian National University in Canberra and, in 1977, appointment to a lectureship at University College, Cork.

Director of the Centre of Canadian Studies at the University of Edinburgh from 1983, Ged became a Reader in History in 1994, and in 1996 was appointed the UK's first permanent Chair in Canadian Studies. He also served from 1993 to 1997 as Deputy Director of the University's International Social Sciences Institute. Since 2001 he has lived in Ireland

where he is a Fellow of the Royal Historical Society, an Emeritus Professor of the University of Edinburgh and Honorary Adjunct Professor of History at the National University of Ireland, Galway.

With such a background, it is not surprising that Ged has maintained a life-long interest in Parnell, and the latest fruits of this interest can be found in *The Cambridge Union and Ireland 1815-1914*, which is a contribution both to the social history of 19th-century Cambridge University and to the history of British (or rather, English) elite attitudes towards Ireland. His absorbing study (together with a host of other fascinating materials) is available free online at:

<http://www.gedmartin.net/>



CHARLES STEWART PARNELL

## TRACING TEA?



**MEGAN BOOT** (2005), is marking the 350th anniversary of the introduction of tea into Britain - albeit in an unusual way. She is part of 'Tracing Tea' - an eight-part documentary following some of the ancient tea routes

from Darjeeling to London. This 15,000 mile trip through eighteen countries and three mountain ranges is being undertaken in two humble tuk tuks that have a top speed of 35mph! A Cambridge-born idea, the producer, several of the presenters, researchers and logisticians behind the venture are Cambridge graduates. Megan recently told *Magdalene Matters*:

"The documentary will explore the stories of espionage, warfare, philosophy and medicine that infuse the tale of tea. Many of the countries along our route tend to receive negative representation in the mass media; 'Tracing Tea' seeks to change that. Travelling without a

political, religious or social agenda, the team will take time to discover, record and ultimately present the stories of ordinary people in extraordinary places. In doing so we hope to showcase the rich cultural heritages, varying religious traditions and fascinating social practices lived each day by people along the route".

Megan graduated from Magdalene this summer with a BA in Social and Political Sciences. She joined the team as a production assistant on the shoot, and also heads up the education project and radio series being made in conjunction with the documentary. To find out more visit: [www.tracingtea.com](http://www.tracingtea.com)

## NEWS IN BRIEF

**THE REVEREND CANON TIMOTHY YATES** (1955) has been elected an Honorary Fellow of *St John's College, Durham*.

**HUSSEIN HASSOUNA** (1963) Ambassador of the League of Arab States in the United States has recently been elected a member of the International Law Commission of the United Nations.

**IGOR JUDGE** (1963) has been made a life peer following his appointment as Lord Chief Justice of England and Wales (see *Magdalene email* October 2008 for further details).

**GARETH HAWKESWORTH** (1968) has been appointed Resident Judge at Cambridge Crown Court.

**MILES CATO** (1983) has published "*Parry: The Life and Works of William Parry A.R.A. (1743-1791)*".

**BRIGADIER ROBERT HALL** (1986) has been elected Chairman of Wiltshire County Council.

**DR LIZ WILLIAMS** (1988) has recently published two novels: *Winterstrike* (in the UK) and *The Shadow Pavilion* (in the US). The latter has been optioned for film and/or television. She has also co-edited an anthology: *Fabulous Whitby*.

**MARY O'HARA** (1988) has been awarded a *Fulbright - Alistair Cooke Award in Journalism*. The award given in memory of the great broadcaster enables the recipient to undertake a Masters in Journalism in the US.

## MEMBERS' OFFERS

These wines are available to members at special prices through CAMBRIDGE WINE MERCHANTS. Further details can be found on [webALUMNUS](#)

### SACRED HILL RANGE

*Semillon-Chardonnay 2006, de Bortoli:* This Gold Medal winning Australian white combines a rich, honeyed initial impact with a crisp, ripe citrus undertow. RRP £5.49 – Offer price £4.59

*Shiraz Cabernet 2006, de Bortoli:* Bright ruby, delicious aromas of red berries, very ripe fruit and juicy acidity – a great all-rounder. RRP £5.49 Offer price - £4.59.

### WHITE

*Harmonie de Gascogne Blanc 2007, Domaine de Pellehaut:* An utterly enchanting wine from the Gascony region. Delicately flavoured, both floral and fruity, with a wonderfully dry finish. RRP £5.99 Offer price £5.25.

*Roero Arneis Cru Perdaudin 2006, Negro Angelo* Coming from Piemonte, this Arneis is a bright gold with lovely tropical fruit and good weight of citrus creaminess. Clean and soft acidity with a long elegant finish. RRP £13.99 - Offer price £12.59 or £11.19 each as a case of 12.

### RED

*Chateau Franc Couplet 2002, Bordeaux Superior:* Dark, with mineral undertones and a touch of earthiness in the classic Bordeaux style. Serious big dinner wine. RRP £6.95 – Offer price £6.00.

*Sudisfa Roero 2004, Angelo Negro:* Intense garnet red colour, this 100% Nebbiolo comes from the Piemonte region of Italy. Hints of dry fruits, jam, vanilla and green pepper. The taste is well-rounded with wide structure and sweet silky tannins. Full-bodied, warm and ethereal. RRP £29.99 – Offer price £26.96 or £24.27 each as a case of 12.

*Tempranillo Reserva 2001, Castillo de Manzanares:* Rioja quality from (undeservedly) less fashionable La Mancha. Ticks all the boxes: smells like a leather armchair, pale fruit, cigar box, a touch rustic, nice touch of maturity. From the stunning 2001 vintage, a superb wine for dinner or sipping. RRP £6.15 – Offer price £4.64.

### SPARKLING

*Champagne Royer Brut Reserve NV:* Full-bodied, nutty and great value. The Royer family live in the southern Aube district of Champagne, which is almost all the way to Dijon – much warmer than Reims – so the wines are richer. Came second out of 22 Champagnes at a recent May Ball blind tasting. RRP £17.99 – Offer price £15.99.

*Angas Brut Sparkling NV, Yalumba:* Easily the best Oz Sparkler any where near this price. Rich and full Pinot-derived flavour with good texture, balance and length. RRP £7.99 - Offer price £5.99.

### WHISKY

*Sound of Islay Single Malt Cask No 4:* A peaty, young (but rare) single malt at a very good price. Whisky connoisseurs should translate the name to Gaelic to find out what a treat this is! Price £25.00.

*Nightcap Set:* Small crystal decanter with two glasses, all engraved with the College crest and name. An ideal present – especially when combined with College whisky! Price £20.00

Please note that any of these wines are limited in stock and will be available on a first come first served basis.

### IN ADDITION:

25% off a range of 50 products for all College members and staff at two of Cambridge Wine Merchants branches: 2 King's Parade and 32 Bridge Street.

PLEASE NOTE: It is regretted that Cambridge Wine Merchants can only deliver to the UK.

### ORDERING

The featured wines (as well as a range of Magdalene glassware) can be ordered by post, telephone or email from:

Cambridge Wine Merchants Ltd,  
2 King's Parade Cambridge, CB2 1SJ  
tel: 01223 309309  
[magdalene@cambridgewine.com](mailto:magdalene@cambridgewine.com)

Postage and packing is £8 per 12 bottles for wine and whisky and the minimum order is 12 bottles, which may comprise any mixture of whiskies and wines. P&P for Glassware is £5 per 8 glasses or per decanter.

## MAGDALENE MAY BALL 2009



17<sup>th</sup> June 2009

Special tickets available exclusively to Magdalene College alumni will be sold from 10<sup>th</sup> November 2008

[www.magdalenemayball.com](http://www.magdalenemayball.com) tel: 01223 524649  
[presidents@magdalenemayball.com](mailto:presidents@magdalenemayball.com)

THE BIENNIAL MAGDALENE MAY BALL will take place on 17th June 2009. It will aim, as always, to be the best of its kind. Certainly its energetic organising committee is hard at work making sure that all of the customary attractions, as well as a few special surprises, are in place in time for the the big night.

As in previous years, members are invited to apply for tickets before they go on sale to the general public. These, as well as a number of "special packages", will be available from 10 November 2008 for a limited period.

Anyone wishing to purchase tickets or interested in finding out more about the Ball and the special offers which will be available to members is warmly encouraged to visit the May Ball website ([www.magdalenemayball.com](http://www.magdalenemayball.com)) or to contact the organisers by email [presidents@magdalenemayball.com](mailto:presidents@magdalenemayball.com); telephone +44 [0]1223 524649 or in writing to: The May Ball President, Magdalene College, Cambridge, CB3 0AG

## christmas cards 2008

Christmas Cards are available again this year in the design first offered last year. They feature a specially commissioned drawing of the Pepys Building in winter by well-known local artist Roger Connelly.



The card measures 12 x 8 cms and is available in packs of 5 for £5.99 plus £1 post and packing. Cards come as "blank" or bearing the message "Wishing you a Merry Christmas and a Happy New Year". The latter are in limited supply.

To place an order please contact the Alumni & Development Office by telephone 01223 332104 or email [development@magd.cam.ac.uk](mailto:development@magd.cam.ac.uk)

Orders will be dispatched on receipt of a cheque or Credit Card details.

ON FIELDS O'ER WHICH THE REAPERS HAND HAS PASSED

by Henry David Thoreau

On fields o'er which the reaper's hand has pass'd  
Lit by the harvest moon and autumn sun,  
My thoughts like stubble floating in the wind  
And of such fineness as October airs,  
There after harvest could I glean my life  
A richer harvest reaping without toil,  
And weaving gorgeous fancies at my will  
In subtler webs than finest summer haze.



# THE COLLEGE

## landscape festival

FOLLOWING ON FROM THE SUCCESS TWO YEARS AGO of the *Festival of Literature*, Jane Hughes and Geography Fellow Tom Spencer have put together an exciting programme of events built around the theme of landscape.

An ambitious series of multi-media events was launched on 27 September with an "Open Garden". At its peak some 2,000 members of the College and the public were to be seen enjoying the Fellows' Gardens, as well as tea and entertainment, in (unexpectedly) warm sunshine.

In October, the first lecture (given by Dame Fiona Reynolds, *Director General of the National Trust*) and the first 2 in a series of 5 "conversations" about landscape - each led by authorities on their subjects - took place. These covered the topics of: *Coasts and Rocks and Mountains*. A series of exhibitions, readings and performances is also planned as is a larger conference and two competitions.

Events remaining in this Term's calendar (further details of which can be found by visiting [www.magdalencambridge.com/landfest](http://www.magdalencambridge.com/landfest)) include:

**12 November: Conversation 3: Fens and Bogs**

**19 November: Conversation 4: Woods and Forests**

**26 November: Conversation 5: Urban Landscapes**



Magdalene "Open Garden" - photographs courtesy Lovedy Cornish

## FELLOWSHIP NEWS

The Master, **Duncan Robinson**, was awarded the CBE in the Queen's Birthday Honours List.



Nick Boyle

**The President, Nicholas Boyle**, has visited the US, lecturing in Portland, Oregon (on *Faust*) and in Alexandria, Virginia on the future of American-European relations. The latter talk, to a group of alumni and friends hosted by **Nigel Morris**, Honorary Member, also offered a brief opportunity to inform the College's American supporters about the new Library project.

**Robin Spence** has reached retirement age, after 31 years as our Director of Studies in Architecture. Robin's list of distinguished and influential architectural pupils is too long to detail here. Suffice it to say that you almost certainly live in or near something designed by one of them.



Robin Spence

**Roger O'Keefe** has been promoted to a *University Senior Lectureship* in Law, and becomes Dean of College.

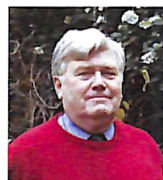


Andrew Thompson

**Andrew Thompson** has added to his already impressive portfolio of post-retirement responsibilities by becoming Treasurer of both the *Cambridge Commonwealth Trust* and the *Cambridge Overseas Trust*.

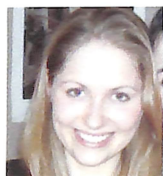
**Gareth Pearce** has been appointed *Adjunct Associate Professor in Conservation Medicine* within the *Faculty of Health Sciences School of Veterinary & Biomedical Sciences at Murdoch University* in Perth, Western Australia, further strengthening the College's already impressive ties to that part of the world.

**Bob Skelton** has been elected as a *Trustee and Chairman* of the Membership Committee of the new *Nuclear Institute*.



Bob Skelton

**Tony Cockerill** has been elected a *Senior Research Fellow* of the College.



Alexandra Mullen

We welcome two new Junior Research Fellows: **Alexandra Mullen** is the *Lumley JRF*. She read Classics at Jesus College where she has been completing her doctorate. Her research centres on historical linguistics: particularly the application of modern bilingualism and language contact theory to the ancient world. **Allon Klein**

is the new *Neville JRF*. He read Physics at Hughes Hall, where he won the *Cavendish Physics Prize* in his first year and the *Neville Mott Prize for Theoretical Physics* in his final year. After a brief interlude in the

City he returned to Cambridge and embarked on a PhD at the unexpected interface between theoretical physics and stem cell biology. His current research uses the tools of statistical physics to understand how stem cells maintain tissue in mammals.



Ulrich Kerzel

**Ulrich Kerzel** who read Physics at the University of Karlsruhe, Germany has been elected to the *Raymond and Beverly Sackler Research Fellowship*. His research focuses on why the laws of nature treat matter and anti-matter differently, and the puzzle of why there is so much matter left in the universe today.

We also welcome two new Bye-Fellows: **Su Lin Lewis** grew up in Canada as well as Japan, Korea, Thailand, and Indonesia. She completed an undergraduate degree in *History and Contemporary Studies* at the *University of King's College* in Halifax, Nova Scotia and a Masters degree in Asian History at the *School of Oriental Studies, University of London*. Her PhD research is on urban intellectual culture in South-east Asian port-cities of the 1920s and 1930s.



Su Lin Lewis

**Sandra Korte** was born and raised in Germany, where she completed her first degree in mechanical engineering at *RWTH Aachen University*. In 2005 she went to New Zealand, extending her stay to enrol for a Masters in Engineering. She came to Magdalene in 2006 to pursue a PhD in Materials Science. Her research is part of a collaborative project designed better to understand deformation in layered structures and small volumes in the submicron range.



Sandra Korte

**Professor Joseph Theodoor (Joep) Leerssen** is this year's *Parnell Visiting Fellow in Irish Studies*. After studying Comparative Literature and English at *Aachen University* in Germany, he obtained an MA in Anglo-Irish Studies from *University College Dublin* in 1990. From 1982 to 1984 he taught at the *University of Toronto* and from 1984-86 in *Aachen*, before gaining his doctorate with honours from *Utrecht University* in 1986. Since 1991 he has been *Professor of Modern European Literature at the University of Amsterdam*. He was elected a member of the *Royal Netherlands Academy of Arts and Sciences* earlier this year. Joep, one of whose specialisms is the early-modern cultural history of Ireland, is one of the founders of the interdisciplinary field of European Studies. He has just won the *Spinoza Prize*, the domestic Dutch equivalent of the Nobel Prize. He will be in residence in the Lent Term, when he will deliver his Parnell Lecture.



Joep Leerssen

# ALUMNI EVENTS

## dates for your diary

2008 *Please note: full details of all events are available on our website; places for many of them can be reserved online via [webALUMNUS](#)*

**Friday 7 November: New York Dinner\***, Union Club, New York. Drinks 6.15 for 7pm \$100 per person or \$50 for those under 26 and in full-time education. Business attire, personal guests welcome. Contact: [MAM@magd.cam.ac.uk](mailto:MAM@magd.cam.ac.uk)

**Monday 10 November: Florida Event\***: *Four Seasons Hotel*, Miami. Drinks reception and lecture by Dr Mark Billinge (in association with CAm and open to all Cambridge alumni) followed by a dinner for Magdalene members and their guests only (details *tbc*). Contact: Kathy Lord ([Kathy@cantab.org](mailto:Kathy@cantab.org)) (Lecture); [alumni@magd.cam.ac.uk](mailto:alumni@magd.cam.ac.uk) (dinner only).

**Wednesday 12 November: Washington Event\***: *Metropolitan Club*, Washington. Drinks reception and lecture by Dr Mark Billinge (in association with CAm and open to all Cambridge alumni) followed by a dinner at the Club for Magdalene members and their guests only. Contact: Kathy Lord ([Kathy@cantab.org](mailto:Kathy@cantab.org))(Lecture) and [MAM@magd.cam.ac.uk](mailto:MAM@magd.cam.ac.uk) (dinner only).

**Friday 14 November: Toronto Dinner\***: *University Club*, 380 University Avenue, Toronto, M5G 1R6. 7pm for 7.30pm. Business attire, personal

guests welcome. Contact: Chris Robinson ([ChrisRobinsonAssociates@rogers.com](mailto:ChrisRobinsonAssociates@rogers.com)).

**Thursday 27 November: Magdalene in the City\***: evening; time and place *tbc*. Contact: [alumni@magd.cam.ac.uk](mailto:alumni@magd.cam.ac.uk)

### 2009

**January: Hong Kong New Year's Drinks Reception\***. Details *tbc*. The Master will once again host an informal drinks reception during his visit to the SAR. For further details contact: [MAP@magd.cam.ac.uk](mailto:MAP@magd.cam.ac.uk)

**Saturday 28 March: Association Annual Dinner\***: College Hall, Magdalene College. The usual programme of events (tea, lecture, AGM and Dinner) will take place. Further details, including price, *tbc*. Contact: Chris Babbs ([chrisbabbsuk@waitrose.com](mailto:chrisbabbsuk@waitrose.com))

**Saturday 16 May: MA Day\*** (for those who matriculated in 2002): Cripps Court, Magdalene College. The usual programme of events (coffee, lunch and garden party) will take place. For further details contact: [alumni@magd.cam.ac.uk](mailto:alumni@magd.cam.ac.uk)

**Wednesday 17 June: Magdalene Biennial May Ball\*** Details *tbc*. Visit: [www.magdalenecambridge.com](http://www.magdalenecambridge.com)

**Saturday 18 July: Magdalene – Magdalen Joint Event\***: members of Magdalene Cambridge are invited to join members of Magdalen Oxford at Magdalen Oxford. A full programme of events including tours of the College and its libraries, lunch and tea will be arranged. Further details *tbc*. Contact: Chris Babbs ([chrisbabbsuk@waitrose.com](mailto:chrisbabbsuk@waitrose.com))

### COLLEGE REUNIONS (2009)

**Saturday 2 May: Lunch\*** (for those who matriculated up to 1951)

**Saturday 27 June: Dinner** (1999 & 2000)

**Friday 18 September: Dinner** (1960-1964)

**Friday 25 September: Dinner** (1965-1969)

**Non-resident Member Nights**: Friday 23 January; Friday 13 February and Friday 6 March. Drinks from 7pm in the SCR.

Contact: [alumni@magd.cam.ac.uk](mailto:alumni@magd.cam.ac.uk)

For the latest details on all of these events please go to: [www.magdalenecambridge.com](http://www.magdalenecambridge.com)

\* guests are most welcome at events marked with an asterisk

## MAGDALENE ABROAD

**NOVEMBER WITNESSES THE START** of our annual programme of overseas events. It begins this year in the US where the "full College - team", led by the Master, will attend the Annual New York Dinner on 7 November. This will be followed by a week of events in 3 other North American cities including a dinner on 14 November in Toronto (our 3rd Toronto Dinner and 4th such Canadian event). Further details of the full North American programme can be found in the panel above.

In January, the Master will travel to Hong Kong and hopes to host his now traditional informal reception during his visit. Details will be posted on the A&DO website when they become available.

In September 2009 (times *tbc*), the Master and Mrs Robinson, together with the Fellow for Development, will again be in the Far East attending dinners currently planned for Hong Kong, Singapore and Malaysia. It is hoped that Dr Martin and Dr Harper will also be in the region for these dinners which are organised in conjunction with MAP (Secretary Henry Pang: [MAP@magd.cam.ac.uk](mailto:MAP@magd.cam.ac.uk)). We look forward to meeting with as many local members as possible in all of these locations. Further details will be posted on the website as soon as they become available. The Master hopes to combine these visits with a "quick" excursion to Australia where, it is hoped, an inaugural MOZ event can be organised.

We remain immensely grateful to all of our local organisers and to our members who



support our overseas events in such heart-warming numbers. Further details of the full 2008/9 overseas programme can be found at: <http://www.magdalenecambridge.com/Magdalene%20Overseas.html>

For those unable to join us on any of these occasions, there are always our virtual "alternatives": [webALUMNUS](#) and [magdalene4u](#). Links to both online services can be found at: <http://www.magdalenecambridge.com>

## CASH FOR QUESTIONS? YAHOO!



Do you search the Internet? If so, you could be helping to raise funds for the *Magdalene Campaign* simply by using a particular search engine. As a result of a partnership between the College and global search engine provider *Yahoo!*, each search you make using the customised

Magdalene-*Yahoo!* searchbox, can earn an average of 5p for Magdalene AT NO COST TO YOU OR TO THE COLLEGE.

Research suggests that the average internet user makes around 600 searches per year, so simply by making the Magdalene-*Yahoo!* searchbox your default engine, you could generate £30 a year for Magdalene! If all of our members who regularly surf the net choose to do so in this way, the College would receive a significant boost to its annual development funds.

As internet users will know, every time you use a search engine,

sponsored links or banners are often displayed. These have usually been paid for by other companies as part of their marketing efforts. Such "placement" generates a significant revenue for the search engine providers who are always looking for ways to increase visitor numbers. They are happy, therefore, to enter into partnership with 3rd parties who help them to do this and in return, the search engine pays its partners *cash per search*.

The Magdalene-*Yahoo!* search box is a simple add-on that takes less than a minute to download and requires no technical wizardry to install. Two clicks and the job is done. To install the Magdalene-*Yahoo!* search box on all or any of your computers (both at work and at home) visit: <http://register.chpadmin.co.uk/browsersearch.asp?OrgID=3233> and add Magdalene as your default search provider. The link is also available via the homepage of the Alumni & Development Office site: [www.magdalenecambridge.com](http://www.magdalenecambridge.com).

That's it! Now you are searching for an even better reason.

