

## Exhibition

### George Mallory: Magdalene to the Mountain

20 Jun 2024 - 28 Sep 2024

14:00 PM - 16:00 PM

Magdalene College

An exhibition reflecting on the life and career of George Mallory.

The exhibition will draw on material held in the Magdalene College Archive to reflect on the life and career of George Mallory.

Starting by focusing on his time at Magdalene and covering his academic interests, his sporting achievements and his social and cultural pursuits. It will move on to highlight his experiences during WWI, drawing on the letters he exchanged with his wife Ruth during his service in France. This provides invaluable information into his character and also the social history of life at home and the part played by women.

The remainder of the exhibition looks at his time on the three expeditions to Everest and his lecture tour in the USA as told through his own letters, before commemorating the deaths of Mallory and Irvine on the mountain.

The exhibition will coincide with the conclusion of a major project to digitise all of Mallory's correspondence allowing these letters to be made available for viewing online.

In association with The Foster Museum, Palo Alto, California, the archival material will be complemented by a series of watercolours of the north and eastern faces of Mt. Everest, and its northern approaches, by the *en plein air* artist Tony Foster.

#### Opening Times

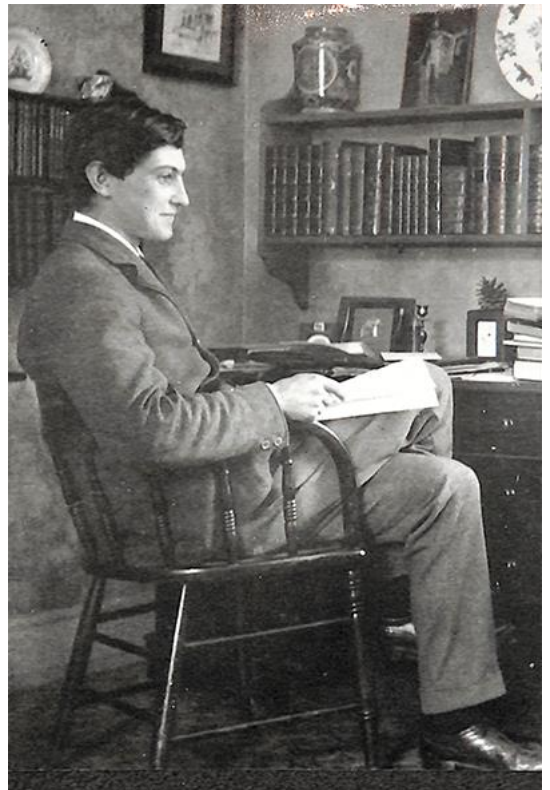
20 June - 28 September 2024

Open: 14:00 - 16:00 Monday - Saturday

Closed: Sunday

The Gallery will be closed on Thursday 5 September and Saturday 14 September. We apologise for any inconvenience caused.

#### Information for Visitors



- to arrange access to the exhibition please call in to the Porters' Lodge on Magdalene Street
- entrance will be to the Gallery only
- visitors are requested not to enter other parts of the New Library

## Location

### The Robert Cripps Gallery

#### Magdalene College

Magdalene College, Magdalene Street, Cambridge, CB3 0AG

# The Foster Museum

WATERCOLOUR  
WILDERNESS  
JOURNEYS

*This exhibition has been supported in part by [The Foster](#), a museum in Palo Alto California, whose mission is to unite and celebrate artist explorer Tony Foster's watercolor wilderness Journeys and inspire connection to art and the natural world. In addition to serving as a presentation place for Tony's artwork, the museum organizes and collects Tony's archives and helps facilitate exhibitions of his Journeys around the globe.*



### **Tony Foster *Everest North Face from Above Rongbuk Monastery Looking South, 2007***

Graphite and watercolour on paper, kata, glass tube, newspaper, sealing wax, melted snow, glass bottle, map

Collection Jane Woodward